

This discussion paper is/has been under review for the journal Solid Earth (SE).
Please refer to the corresponding final paper in SE if available.

Floating sandstones off El Hierro (Canary Islands, Spain): the peculiar case of the October 2011 eruption

V. R. Troll^{1,2}, A. Klügel³, M.-A. Longpré⁴, S. Burchardt¹, F. M. Deegan¹,
J. C. Carracedo⁵, S. Wiesmaier⁶, U. Kueppers⁶, B. Dahren¹, L. S. Blythe¹,
T. Hansteen⁷, C. Freda², D. A. Budd¹, E. M. Jolis¹, E. Jonsson^{1,8}, F. Meade^{1,9},
S. Berg¹, L. Mancini¹⁰, and M. Polacci¹¹

¹Dept. of Earth Sciences, CEMPEG, Uppsala University, Sweden

²Istituto Nazionale di Geofisica e Vulcanologia, Rome, Italy

³Institute of Geosciences, University of Bremen, Germany

⁴Dept. of Earth and Planetary Sciences, McGill University, Canada

⁵Dept. of Physics (Geology), GEOVOL, University of Las Palmas, Gran Canaria, Spain

⁶Dept. of Earth and Environmental Sciences, Ludwig-Maximilians Universität (LMU),
Munich, Germany

⁷Leibniz-Institute for Oceanography, IFM-GEOMAR, Kiel, Germany

⁸Geological Survey of Sweden, Uppsala, Sweden

⁹School of Geographical and Earth Sciences, University of Glasgow, UK

Floating sandstones off El Hierro (Canary Islands, Spain)

V. R. Troll et al.

Title Page

Abstract

Introduction

Conclusions

References

Tables

Figures

◀

▶

◀

▶

Back

Close

Full Screen / Esc

Printer-friendly Version

Interactive Discussion



¹⁰SYRMEP Group, Sincrotrone Trieste S.C.p.A, Basovizza, Trieste, Italy

¹¹Istituto Nazionale di Geofisica e Vulcanologia, Sezione di Pisa, 56124 Pisa, Italy

Received: 18 November 2011 – Accepted: 22 November 2011 – Published: 1 December 2011

Correspondence to: V. R. Troll (valentin.troll@geo.uu.se)

Published by Copernicus Publications on behalf of the European Geosciences Union.

SED

3, 975–999, 2011

Floating sandstones off El Hierro (Canary Islands, Spain)

V. R. Troll et al.

Title Page

Abstract

Introduction

Conclusions

References

Tables

Figures

◀

▶

◀

▶

Back

Close

Full Screen / Esc

Printer-friendly Version

Interactive Discussion



Abstract

The eruption that started off the south coast of El Hierro, Canary Islands, in October 2011 has emitted intriguing eruption products found floating in the sea. These specimens appeared as floating volcanic “bombs” that have in the meantime been termed “restingolites” (after the close-by village of La Restinga) and exhibit cores of white and porous pumice-like material. Currently the nature and origin of these “floating stones” is vigorously debated among researchers, with important implications for the interpretation of the hazard potential of the ongoing eruption. The “restingolites” have been proposed to be either (i) juvenile high-silica magma (e.g. rhyolite), (ii) remelted magmatic material (trachyte), (iii) altered volcanic rock, or (iv) reheated hyaloclastites or zeolite from the submarine slopes of El Hierro. Here, we provide evidence that supports yet a different conclusion. We have collected and analysed the structure and composition of samples and compared the results to previous work on similar rocks found in the archipelago. Based on their high silica content, the lack of igneous trace element signatures, and the presence of remnant quartz crystals, jasper fragments and carbonate relicts, we conclude that “restingolites” are in fact xenoliths from pre-island sedimentary rocks that were picked up and heated by the ascending magma causing them to partially melt and vesiculate. They hence represent messengers from depth that help us to understand the interaction between ascending magma and crustal lithologies in the Canary Islands as well as in similar Atlantic islands that rest on sediment/covered ocean crust (e.g. Cape Verdes, Azores). The occurrence of these “restingolites” does therefore not indicate the presence of an explosive high-silica magma that is involved in the ongoing eruption.

1 Introduction

On 10 October 2011, a submarine eruption began off the south coast of El Hierro (ca. 27°37' N; 18° 0' W), the westernmost and youngest (1.12 Ma; Guillou et al., 1996)

SED

3, 975–999, 2011

Floating sandstones off El Hierro (Canary Islands, Spain)

V. R. Troll et al.

Title Page

Abstract

Introduction

Conclusions

References

Tables

Figures

◀

▶

◀

▶

Back

Close

Full Screen / Esc

Printer-friendly Version

Interactive Discussion



island of the Canaries. Surface expressions of this eruption, the first to be witnessed at El Hierro, included green discolouration of seawater (locally known as “la mancha”) and strong bubbling and degassing. In addition, abundant rock fragments resembling lava bombs on a decimetre scale, and characterised by glassy basaltic crusts and white to cream coloured interiors, were found floating on the ocean surface during the first days of the eruption. The interiors of these floating rocks are glassy and vesicular (similar to pumice), and mingling between the pumice-like interior and the enveloping basaltic magma is often observed. These floating rocks have become locally known as “restingolites” after the nearby village of La Restinga. Their nature and origin remain elusive however, with suggestions from the scientific community including: (i) that the “restingolites” are in fact juvenile and potentially explosive high-silica magma, (ii) that they are fragments of marine sediment from the submarine flank of El Hierro, and (iii) that they are relatively old, hydrated volcanic material (see e.g. Coello, 2011; Gimeno, 2011). However, none of these interpretations provides a satisfying fit to the available observations, since, for instance, high-silica volcanism is uncommon on El Hierro, and magmatic minerals (either grown in magma or as detritus from erosion) are entirely absent in the “restingolites”. Given that the involvement of highly evolved, high-silica magmatism would have implications for the explosive potential of the eruption, it is important to clarify the nature of the “restingolites” in order to fully assess the hazards associated with the ongoing El Hierro eruption. Furthermore, in the case where the “restingolites” can be shown not to originate from high-silica magma, unravelling their genesis will provide unique insights into the volcano-magma system beneath El Hierro. We collected samples of the floating “restingolites” on 21–25 October and 28 October of 2011 for textural, mineralogical, and elemental analysis. The results lead us to conclude that the “restingolites” from El Hierro are crustal xenoliths that originate from the layer of pre-island sedimentary rocks (layer 1 of the oceanic crust) underneath the Canary Islands.

Floating sandstones off El Hierro (Canary Islands, Spain)

V. R. Troll et al.

Title Page

Abstract

Introduction

Conclusions

References

Tables

Figures

◀

▶

◀

▶

Back

Close

Full Screen / Esc

Printer-friendly Version

Interactive Discussion



2 Analytical methods

2.1 Imaging and micro-analysis: electron probe micro analyser

Scanning electron microscopy (SEM) imaging and micro-analysis of the “restingolites” was carried out in the Centre for Experimental Mineralogy, Petrology and Geochemistry (CEMPEG) at Uppsala University, Sweden, using a JXA-8530F JEOL HYPERPROBE field emission electron probe micro-analyser (FE-EPMA). The FE-EPMA is equipped with four wavelength-dispersive spectrometers (WDS) and secondary and backscattered electron detectors. Microprobe EDS analyses were performed using an accelerating voltage of 15 kV, a beam current 5 nA, and a beam diameter of 5 µm for glass and 1 µm for mineral analyses.

2.2 Mineralogy: XRD

Samples of “restingolites” were crushed to mm-sized chips and separated from the enclosing lava by hand-picking the pumice chips for pristine appearance. The clean chips were then pulverised to a fine powder using an agate mill at CEMPEG, Uppsala University. The mineral assemblage of the El Hierro “restingolite” rock powders was subsequently determined by X-ray diffraction (XRD) using a Siemens/Bruker D5000 diffractometer at the Geological Survey of Sweden (SGU) laboratory in Uppsala, Sweden.

2.3 Major and trace elements: XRF and LA-ICP-MS

The major and trace element composition of four representative “restingolites” were determined by X-ray fluorescence (XRF) and laser ablation inductively coupled plasma mass spectrometry (LA-ICP-MS) at the University of Bremen, Germany. For XRF analyses, hand-picked pumice chips were cleaned in an ultrasonic bath and pulverise in an agate mill. Loss on ignition at 1000 °C was determined gravimetrically. About 3 g of powder was mixed with wax, pressed into a pellet and analysed using a

SED

3, 975–999, 2011

Floating sandstones off El Hierro (Canary Islands, Spain)

V. R. Troll et al.

Title Page

Abstract

Introduction

Conclusions

References

Tables

Figures

◀

▶

◀

▶

Back

Close

Full Screen / Esc

Printer-friendly Version

Interactive Discussion



Philips PW1400. LA-ICPMS analyses were carried out on clean pumice chips using a NewWave UP193ss LA-ICP-MS coupled to a Thermo Element2. Analytical conditions included a laser beam diameter of 75 μm , a pulse rate of 5 Hz, an irradiance of ca. 1 GW cm^{-2} , and 0.66 l min^{-1} He as a sample gas. NIST612 glass was used for quantification with Ca as the internal standard element; data quality was monitored by analysing BHVO-2G glass.

3 Results

3.1 Textural observations

The cores of the “restingolites” that were erupted offshore El Hierro stand in a sharp contrast to their glassy, basaltic crusts (Fig. 1). They range in colour from white and cream to medium and dark grey and exhibit a foam- (or pumice-) like texture (Fig. 2) and a glassy matrix. This results in extremely low densities that enable them to float on water, in spite of carrying a dense basaltic crust. Individual vesicles may be up to several mm in size, but typically they are on the sub-mm level (Fig. 3). The vesicles are heterogeneously distributed throughout the rock, occurring in bands, individually or as clusters (e.g. Figs. 1–3). In particular, some of the “restingolites” show physical mingling textures with the basaltic magma expressed as flow folds and schlieren structures (e.g. Fig. 1e, f and Fig. 2e). Layering that is identified as primary by changes in colour, which is also frequently folded, indicates a ductile deformation episode (e.g. Fig. 1d–f).

3.2 Mineral and glass phases

All samples are glassy and light in colour and most samples are macroscopically crystal-free, however, occasional quartz crystals, jasper fragments, gypsum aggregates, and carbonate relicts have been identified in hand specimen (Fig. 2a–c). X-ray diffractograms indicate the presence of principally quartz, biotite and/or illite, and glass.

SED

3, 975–999, 2011

Floating sandstones off El Hierro (Canary Islands, Spain)

V. R. Troll et al.

Title Page

Abstract

Introduction

Conclusions

References

Tables

Figures

◀

▶

◀

▶

Back

Close

Full Screen / Esc

Printer-friendly Version

Interactive Discussion



The occurrence of halite documents the influence of sea water. There is a notable absence of primary igneous minerals from the XRD data (Table 1). A comparatively significant phyllosilicate peak at ca. 10 Å probably reflects thermal decomposition of smectites (Appendix Fig. A2, A3).

5 SEM and Energy-Dispersive X-ray (EDX) analysis has revealed the largely glassy and pervasive vesicular nature of the samples (Fig. 3; Table 2). Microscopic quartz crystals have also been identified and analysed by FE-EPMA (Fig. 3c; Table 2).

3.3 Major and trace element composition

10 The major element composition of glass and crystal phases in the “restingolites” obtained by EDX is given in Table 2. Major and trace element data obtained by XRF on three representative “restingolites” are presented in Table 3. For comparison, the following representative data are also given in Fig. 4 and Table 3: (i) siliciclastic crustal xenoliths from Gran Canaria and Lanzarote (Hansteen et al., 1998; Hansteen and Troll, 2003; Aparicio et al., 2006), (ii) ocean floor dredged sediment (Berg, 2011), (iii) basanites and trachytes from El Hierro (Pellicer, 1979; Carracedo et al., 2001), (iv) trachytes and rhyolites from Gran Canaria (Troll and Schmincke, 2002), and (v) basanites and phonolites from Tenerife (Wolff and Palacz, 1989; Wiesmaier, 2010).

15 The composition of glass in the “restingolites” and bulk white core samples is dominated by SiO₂ (70 to 80 wt. %) (Tables 2 and 3). In fact, the glassy coating on the sedimentary restite in Fig. 3c contains 89 wt. % SiO₂, while the crystal in the centre of this image yields 100 wt. % SiO₂ (i.e., it is quartz). Aside from silica, other major constituents are Al₂O₃ (up to 18 wt. %), Na₂O (up to 6 wt. %), and K₂O (about 5 wt. %), while FeO and CaO contents are very low (Tables 2 and 3). The concentration of some trace elements is also remarkably low (e.g. Sr, Zr; Table 3; Fig. 4), given the high SiO₂ content.

SED

3, 975–999, 2011

Floating sandstones off El Hierro (Canary Islands, Spain)

V. R. Troll et al.

Title Page

Abstract

Introduction

Conclusions

References

Tables

Figures

◀

▶

◀

▶

Back

Close

Full Screen / Esc

Printer-friendly Version

Interactive Discussion



The chemical data thus underline that “restingolites” are highly atypical for Canary magma compositions. Chemically, they resemble known sedimentary xenoliths and pre-island sedimentary compositions if their full major and trace element compositions are considered.

4 Similar rocks from elsewhere in the Canary Islands

Eruption products similar to the samples from El Hierro are known from historic and Holocene volcanic activity on the Canary Archipelago. Araña and Ibarolla (1973) report “rhyolitic pumice” erupted during the 1971 eruption of Teneguía on La Palma that are of similar composition (their analysis No. 2, white pumice) and thus likely to be of similar origin to our samples. Xenoliths of similar nature were also found in the 1949 eruptions on La Palma (Klügel et al., 1999) and in eruption products of the submarine volcanic edifice Hijo de Tenerife offshore between Gran Canaria and Tenerife (Schmincke and Graf, 2000). Furthermore, partly melted sandstone xenoliths were found in Holocene basanite eruptives of Gran Canaria (Hansteen and Troll, 2003), and Aparicio et al. (2006, 2010) describe similar xenoliths, some including fossil-bearing limestone and shale from the lavas of the 1730–1736 Timanfaya eruption on Lanzarote. Moreover, uplifted pre-island sedimentary rocks in the Basal complex of Fuerteventura are also quartz-rich, and are interlayered with clays and carbonates (cf. Stillman et al., 1975).

We have analysed samples of such xenoliths from Gran Canaria, La Palma, and Lanzarote that have undergone heating, degassing, and expansion. In particular, a suite of samples of white, vesicular sandstone xenoliths from Gran Canaria strikingly resemble the “restingolites” from El Hierro in texture, composition and general appearance. The Gran Canaria sandstone samples are glassy, strongly vesicular (Fig. 2d and e; Fig. 3g–i), and contain variable amounts of strongly altered quartz crystals. Based on their “frothy” texture, we term these and other vesicular xenoliths “xeno-pumice”, because they are pumice-like in appearance but xenolithic in origin. Xeno-pumice from

SED

3, 975–999, 2011

Floating sandstones off El Hierro (Canary Islands, Spain)

V. R. Troll et al.

Title Page

Abstract

Introduction

Conclusions

References

Tables

Figures

◀

▶

◀

▶

Back

Close

Full Screen / Esc

Printer-friendly Version

Interactive Discussion



Gran Canaria exhibits density values as low as 0.54 g cm^{-3} and open porosity values of 78 %. X-ray μ -CT imaging reveals vesicle networks and pipelines, through which gas could leave the xenoliths.

5 Discussion: Nature and origin of the “restingolites”

5 The high silica content coupled with overall low incompatible trace element concentrations, the occurrence of mm-sized relict quartz crystals and the lack of igneous minerals, plus the occurrence of carbonate, clay, jasper, and gypsum relicts are all incompatible with a purely igneous origin for the cores of the floating stones (cf. Table 1). In fact, El Hierro igneous rocks are generally silica undersaturated, and the most evolved
10 igneous rock reported from El Hierro barely reaches silica concentrations of 65 wt. % (Pellicer, 1979). Igneous rocks on El Hierro do not contain any free (primary) quartz crystals (nor do igneous rocks on any of the other Canary Islands).

A potential source of the quartz crystals found in the floating rocks from El Hierro could be sand plumes that originate from large sand storms in the Sahara desert that
15 can transport considerable quantities of aeolian sediment that is deposited in the Canarian Archipelago (e.g. Criado and Dorta, 1999). These recent wind-blown sediments are very fine-grained, which rules out a purely aeolian transport for the mm-sized quartz crystals found in the “restingolites”. Instead, the sedimentary rocks of layer 1 of the pre-island ocean crust consist of material transported from Africa by both wind and
20 turbidity currents (cf. Criado and Dorta, 1999; Ye et al., 1999; Gee et al., 1999; Kraschel and Schmicke, 2002), intermixed with “regular” oceanic background sedimentation. These sedimentary rocks of layer 1 are thus likely to contain larger quartz crystals and a variety of different sedimentary facies. The absence of any igneous minerals, such as pyroxene, amphibole or accessory phases, such as titanite or zircon, in the “restingolites” and their trace-element chemistry demonstrate that the “restingolites” are neither
25 derived from a typical evolved Canary magma, nor from sediments on the submarine slopes of El Hierro, as both would contain igneous minerals. In the former case, they

Floating sandstones off El Hierro (Canary Islands, Spain)

V. R. Troll et al.

Title Page

Abstract

Introduction

Conclusions

References

Tables

Figures

◀

▶

◀

▶

Back

Close

Full Screen / Esc

Printer-friendly Version

Interactive Discussion



sedimentary rocks of layer 1 (Fig. 5; also compare IGN, 2011). In contrast, fragments of the oceanic crust layer 2 and 3 (pillow lavas, sheeted dykes, and layered gabbro) would not rise buoyantly to the sea surface due to protracted melting of basaltic rocks and significantly lower volatile contents.

5 We therefore conclude that the “floating rocks” of El Hierro originate from the sedimentary rocks of layer 1 of the oceanic crust beneath the Canary Islands. Beneath El Hierro, the pre-island sediments are likely to be less voluminous (and probably more fine-grained) than under, e.g., Gran Canaria, and may reside at depths of approximately 5 to 6 km below sea level (Collier and Watts, 2001; Hansteen and Troll, 2003; 10 Fig. 5). Seismicity at El Hierro prior to and in the early phase of the eruption clustered between 7 and 17 km depth, i.e. within the igneous ocean crust and at the base of crustal layer 1 (IGN, 2011).

6 Conclusions

15 The “floating rocks” observed in October 2011 off El Hierro, Canary Islands, originate from pre-island sedimentary rocks, in particular quartz-rich sand- and mudstones, from layer 1 of the oceanic crust beneath El Hierro. The xenoliths are messengers from depth that attest to the importance of magma-crust interaction beneath the Canary Islands. This is likely to be most pronounced in young edifices in their main shield-building stage and may also play a role in the volatile budget of the initial phases of 20 such eruptions. The occurrence of these high-silica rocks does, however, not indicate a high explosivity potential of the eruption as a whole.

25 *Acknowledgements.* We are greatly indebted to Instituto Geográfico Nacional, in particular Maria José Blanco, for support during fieldwork on El Hierro and Vincente Soler of Consejo Superior de Investigaciones Científicas for help with sampling the earliest “floating stones”, during the initial phase of the events. The Consejo del Medio Natural, Cabildo de El Hierro kindly permitted us to take samples. Hans Harrysson and Stefan Sopke are thanked for laboratory support. The Swedish Research Council, the ERC grant EVOKES (SW) and the Deutsche Forschungsgemeinschaft (DFG) supported this work financially.

Floating sandstones off El Hierro (Canary Islands, Spain)

V. R. Troll et al.

Title Page

Abstract

Introduction

Conclusions

References

Tables

Figures

◀

▶

◀

▶

Back

Close

Full Screen / Esc

Printer-friendly Version

Interactive Discussion



References

- Aparicio, A., Bustillo, M. A., Garcia, R., and Araña, V.: Metasedimentary xenoliths in the lavas of the Timanfaya eruption (1730-1736, Lanzarote, Canary Islands): metamorphism and contamination processes, *Geol. Mag.*, 143, 181–193, 2006.
- 5 Aparicio, A., Tassinari, C. C. G., Garcia, R., and Araña, V.: Sr and Nd isotope composition of the metamorphic, sedimentary and ultramafic xenoliths of Lanzarote (Canary Islands): Implications for magma sources, *J. Volcanol. Geotherm. Res.*, 189, 143–150, 2010.
- Araña, V. and Ibarrola, E.: Rhyolitic pumice in the basaltic pyroclasts from the 1971 eruption of Teneguía volcano, Canary Islands, *Lithos* 6, 273–278, 1973.
- 10 Berg, S.: Constraining crustal volatile release in magmatic conduits by synchrotron X-ray μ -CT. Examensarbete vid Institutionen för geovetenskaper, Uppsala Universitet, ISSN 1650-6553, Nr. 225, 2011.
- Carracedo, J. C., Rodríguez Badiola, E., Guillou, H., De La Nuez, J., and Pérez Torrado, F. J.: Geology and volcanology of La Palma and el Hierro, Western Canaries, *Estudios Geológicos*, 57, 1–124, 2001.
- 15 Coello, J. J.: Sobre el origen de la 'restingolita', *Actualidad Volcánica de Canarias- Noticias*, 10 Oct 2011, <http://www.avcan.org/?m=Noticias\&N=911>, 2011.
- Collier, J. S. and Watts, A. B.: Lithospheric response to volcanic loading by the Canary Islands: constraints from seismic reflection data in their flexural moat, *Geophys. J. Int.*, 147, 660–676, 2001.
- 20 Criado, C. and Dorta, P.: An unusual 'blood rain' over the Canary Islands (Spain) The storm of January 1999, *J. Arid. Environ.*, 55, 765–783, 1999.
- Gee, M. J. R., Masson, D. G., Watts, A. B., and Allen, P. A.: The Saharan debris flow: an insight into the mechanism of long runout submarine debris flows, *Sedimentology* 46, 317–335, 1999.
- 25 Gimeno, D.: Informe realizado para el Ayuntamiento de El Pinar, El Hierro, Islas Canarias, sobre un piroclasto de la erupción en curso, Internal report, 10 Oct 2011.
- Guillou, H., Carracedo, J. C., Pérez Torrado, F. J., and Rodríguez Badiola, E.: K-Ar ages and magnetic stratigraphy of a hotspot-induced, fast grown oceanic island: El Hierro, Canary Islands, *J. Volcanol. Geotherm. Res.*, 73, 141–155, 1996.
- 30 Hammer, J. E., Cashman, K. V., Hoblitt, R. P., and Newman, S.: Degassing and microlite crystallization during pre-climactic events of the 1991 eruption of Mt. Pinatubo, Philippines.

Floating sandstones off El Hierro (Canary Islands, Spain)

V. R. Troll et al.

Title Page

Abstract

Introduction

Conclusions

References

Tables

Figures

◀

▶

◀

▶

Back

Close

Full Screen / Esc

Printer-friendly Version

Interactive Discussion



- Bull. Volcanol., 60, 355–380, 1999.
- Hansteen, T. H. and Troll, V. R.: Oxygen isotope composition of xenoliths from the oceanic crust and volcanic edifice beneath Gran Canaria (Canary Islands): consequences for crustal contamination of ascending magmas, *Chem. Geol.*, 193, 181–193, 2003.
- 5 Hansteen, T. H., Klügel, A., and Schmincke, H.: Multi-stage magma ascent beneath the Canary Islands: evidence from fluid inclusions, *Contrib. Mineral. Petrol.*, 132, 48–64, 1998.
- Hoernle, K. A.: Geochemistry of Jurassic ocean crust beneath Gran Canaria (Canary Islands): implications for crustal recycling and assimilation, *J. Petrol.*, 39, 859–880, 1998.
- IGN; Instituto Geográfico Nacional, Ministerio de Fomento, Servicio de Información Sísmica
 10 <http://www.ign.es/ign/resources/volcanologia/HIERRO.html>, 2011.
- Klügel, A., Schmincke, H.-U., White, J. D. L., and Hoernle, K. A.: Chronology and volcanology of the 1949 multi-vent rift-zone eruption on la Palma (Canary Islands), *J. Volcanol. Geotherm. Res.*, 94, 267–282, 1999.
- Krastel, S. and Schmincke, H.-U.: Crustal structure of northern Gran Canaria deduced from active seismic tomography, *J. Volcanol. Geotherm. Res.*, 115, 153–177, 2002
- 15 McLeod, P. and Sparks, R. S. J.: The dynamics of xenolith assimilation, *Contrib. Mineral. Petrol.*, 132, 21–33, 1998.
- Pellicer, J. M.: Estudio geoquímico del vulcanismo de la isla del Hierro, Archipiélago Canario, *Estudios Geol.*, 35, 15–29, 1979.
- 20 Perugini, D., Poli, G., Petrelli, M., De Campos C. P., and Dingwell, D. B.: Time-scales of recent Phlegrean Fields eruptions inferred from the application of a “diffusive fractionation” model of trace elements, *Bull. Volcanol.*, 72, 431–447, 2010.
- Schmincke, H.-U. and Graf, G.: DECOS / OMEX II, Cruise No. 43, METEOR-Berichte 20001, Univ Hamburg, 1–99, 2000.
- 25 Sparks, R. S. J.: The dynamics of xenolith assimilation, *Contrib. Mineral. Pet.*, 132, 21–33, 1998.
- Stillman, C. J., Bennell-Baker, M. J., Smewing, J. D., Fuster, J. M., Muñoz, M., and Sagredo, J.: Basal complex of Fuerteventura (Canary Islands) is an oceanic intrusive complex with rift-system affinities, *Nature* 257, 469–471, 1975.
- 30 Sumita, M. and Schmincke, H.-U.: Tephra event stratigraphy and emplacement of volcanoclastic sediments, Mogán and Fataga stratigraphic intervals, Part I: mineral and chemical stratigraphy of volcanoclastic units and correlation to the subaerial record, in: *Proc. ODP, Sci. Results*, 157, edited by: Weaver, P. P. E., Schmincke, H.-U., Firth, J. V., and Duffield, W., College Sta-

Floating sandstones off El Hierro (Canary Islands, Spain)

V. R. Troll et al.

Title Page

Abstract

Introduction

Conclusions

References

Tables

Figures

◀

▶

◀

▶

Back

Close

Full Screen / Esc

Printer-friendly Version

Interactive Discussion



- tion, TX (Ocean Drilling Program), 219–266, doi:10.2973/odp.proc.sr.157.114.1998, 1998.
- Troll, V. R. and Schmincke, H.-U.: Magma mixing and crustal recycling recorded in ternary feldspar from compositionally zoned peralkaline ignimbrite “A”, Gran Canaria, Canary Islands, *J. Pet.* 43, 243–270, 2002.
- 5 Wiesmaier, S.: Magmatic differentiation and bimodality in oceanic island settings – implications for the petrogenesis of magma in Tenerife, Spain, PhD thesis, University of Dublin, Trinity College, 2010.
- Wolff, J. A. and Palacz, Z. A.: Lead isotope and trace element variation in Tenerife pumices: evidence for recycling within an ocean island volcano, *Mineral. Mag.*, 53, 519–525, 1989.
- 10 Ye, S., Canales, J. P., Rhim, R., Danobeitia, J. J., and Gallart, J.: A crustal transect through the northern and northeastern part of the volcanic edifice of Gran Canaria, Canary Islands, *J. Geodyn.*, 28, 3–26, 1999.

Floating sandstones off El Hierro (Canary Islands, Spain)

V. R. Troll et al.

Title Page

Abstract

Introduction

Conclusions

References

Tables

Figures

◀

▶

◀

▶

Back

Close

Full Screen / Esc

Printer-friendly Version

Interactive Discussion



Floating sandstones off El Hierro (Canary Islands, Spain)

V. R. Troll et al.

Table 1. Minerals present in restingolite samples from XRD analysis. For individual analytical spectra see Appendix Figs. A2 and A3.

Sample	Olivine	Pyroxene	Amphibole	Feldspar	Mica	Quartz	Illite	Halite	Smectite
EH-XP-1	x	x	x	x	✓	✓	✓	x	✓
EH-XP-2	x	x	x	x	✓	✓	✓	✓	✓
EH-XP-3	x	x	x	x	✓	✓	✓	x	x

x = not detected, ✓ = presence confirmed

[Title Page](#)
[Abstract](#)
[Introduction](#)
[Conclusions](#)
[References](#)
[Tables](#)
[Figures](#)
[◀](#)
[▶](#)
[◀](#)
[▶](#)
[Back](#)
[Close](#)
[Full Screen / Esc](#)
[Printer-friendly Version](#)
[Interactive Discussion](#)


Floating sandstones off El Hierro (Canary Islands, Spain)

V. R. Troll et al.

Table 2. Representative EDS analysis of El Hierro restingolite glasses.

Sample I.D.:	EH-XP3	EH-XP4	EH-XP5	EH-XP9	EH-XP11	EH-XP11	EH-XP312	EH-XP13
SiO ₂	73.86	74.62	74.58	75.75	71.99	63.34	89.43	100
Al ₂ O ₃	16.39	17.53	17.33	17.41	18.03	18.017	6.877	–
Fe ₂ O ₃	–	–	–	–	–	–	–	–
MgO	–	–	–	–	–	–	–	–
CaO	2.06	–	–	–	–	–	–	–
Na ₂ O	1.45	2.37	3.83	2.39	4.77	11.66	1.61	
K ₂ O	6.24	5.47	4.26	4.44	5.21	7	2.09	
SO ₃	–	–	–	–	–	–	–	–

Major elements are given as wt. % oxide.

Title Page

Abstract

Introduction

Conclusions

References

Tables

Figures

◀

▶

◀

▶

Back

Close

Full Screen / Esc

Printer-friendly Version

Interactive Discussion



Table 3. Major and trace element composition of El Hierro “floating rocks”. Data for Gran Canaria and Lanzarote crustal xenoliths, ocean floor sediment, and representative Canary Island magmatic rocks are shown for comparison.

	Restingolites			Crustal Xenoliths		Flank Sediment	Representative Magmatic Rocks			
Sample I.D.	H12110 ¹	EH2510-1 ²	EH2110-2 ³	HAT917C ⁴	ANG-58 ⁵	SED174-1-1 ⁶	C1H102 ⁷	EH21 ⁸	Al-MCa ⁹	CAB ¹⁰
SiO ₂	69.19	71.03	68.61	86.7	83.48	32.35	56.43	59.96	69.27	60.88
TiO ₂	0.22	0.18	0.21	0.4	0.36	3.44	1.26	0.91	0.68	0.70
Al ₂ O ₃	15.76	15.10	15.43	4.9	7.05	11.61	19.30	19.38	14.47	19.42
Fe ₂ O ₃	0.73	0.69	0.71	2.5	2.35	12.29	5.60	4.11	3.56	3.30
MnO	0.01	0.02	0.02	0.06	0.05	0.21	0.28	0.24	0.15	0.16
MgO	0.31	0.12	0.55	1.3	2.25	9.98	1.33	0.85	0.29	0.41
CaO	0.48	0.31	0.47	1.2	1.31	5.95	5.73	4.30	0.36	0.97
Na ₂ O	6.09	6.11	6.52	0.8	0.76	2.61	7.23	7.14	6.58	8.37
K ₂ O	4.88	4.73	4.78	0.9	1.5	0.92	2.43	2.90	4.39	5.46
P ₂ O ₅	0.07	0.04	0.05	0.06	0.09	0.94	0.41	0.19	0.06	0.10
LOI	1.19	1.06	1.00	1.57	0.6	19.3	–	–	–	0.31
Sum	98.93	99.39	98.35	100.38	99.80	99.74	100.00	100.00	99.81	100.08
Ba	436.05	543.60	495.99	131	330	114	801	868	693	527
Co	1.10	1.02	0.63	–	5.29	49	4	37	<4	0.6
Cr	5.65	0.52	1.11	–	62.9	166	2	9	<18	5.5
Cu	9.71	2.61	6.43	65.1	10.2	104	–	–	–	<3
Nb	72.51	56.21	56.05	6.5	6.78	78	172	214	148	185
Ni	2.08	1.66	10.30	–	25.6	91	6	–	–	<4
Pb	7.26	14.25	7.14	3.89	–	5.69	–	4	7	17.6
Rb	42.98	49.34	48.29	31.7	56.8	1.8	68.4	93	100	151
Sr	90.44	79.39	135.03	113	127	444	2099	1465	30	34.2
Th	5.53	7.58	6.93	3.62	–	3.5	15	23	19	26.2
U	23.90	11.80	3.28	0.52	–	1.2	–	–	–	6.89
V	0.99	0.47	1.51	–	57.5	193	34.6	37	31	11.7
Zn	21.54	37.40	38.01	28.4	36.0	142	186	149	159	101
Zr	236.83	219.96	211.50	25.6	98.2	310	857	1191	1037	960
Rb/Sr	0.48	0.62	0.36	0.28	0.45	0.00	0.03	0.06	3.33	4.42
U/Th	4.32	1.56	0.47	0.14	–	0.34	–	–	–	0.26
Zr/Nb	3.27	3.91	3.77	3.94	14.44	3.97	4.98	5.56	7.01	5.19
Y	9.98	5.78	4.67	8.57	13.7	32	58.5	53	–	26.3
La	29.23	28.84	34.57	14	14.5	43.9	151	149	93	91.6
Ce	77.76	62.95	85.16	28	29.72	98.66	305	302	397>	153
Pr	7.19	7.55	7.99	3.23	3.61	11.7	36.23	30	–	14.4
Nd	23.85	21.26	25.52	12	13.87	50.1	–	–	–	44.1
Sm	4.14	4.74	4.15	2.49	2.76	8.4	–	–	–	6.75
Eu	0.76	0.80	0.82	0.53	0.64	2.4	–	–	–	1.68
Gd	2.63	2.38	2.49	2.26	2.47	7.0	–	–	–	5.1
Tb	0.39	0.30	0.30	0.31	0.365	0.9	–	–	–	0.82
Dy	2.13	1.57	1.56	1.61	2.248	5.6	–	–	–	4.75
Ho	0.37	0.27	0.22	0.28	0.507	1.0	–	–	–	0.90
Er	0.97	0.62	0.52	0.78	1.3	2.1	–	–	–	2.64
Tm	0.18	0.09	0.09	0.11	0.212	0.3	–	–	–	0.41
Yb	1.15	0.60	0.65	0.64	1.441	1.8	–	–	–	2.91
Lu	0.17	0.08	0.09	0.09	0.26	0.3	–	–	–	0.45
Hf	5.83	6.84	7.24	0.66	–	5.81	–	–	–	16.4
Ta	3.93	4.81	4.79	0.53	–	3.9	–	–	–	12.4

Major elements are given as wt. % oxide; trace elements are given in ppm; “–” indicates that no data is available.

Notes: ^{1–3}Samples of restingolites collected off-shore El Hierro, October 2011. Major elements analysed by XRF; trace elements by LA-ICP-MS at the University of Bremen, Germany. ⁴HAT917C is a siliclastic sedimentary xenolith from Gran Canaria (Hoernle, 1998; Hansteen and Troll, 2003). ⁵ANG-58 is a siliclastic sedimentary xenolith from Lanzarote (Aparicio et al., 2006). ⁶SED 174-1-1 is an El Hierro submarine flank sediment (Berg, 2011). ⁷Trachytes from El Hierro (Carracedo et al., 2001). ⁸Trachytes from El Hierro. Data obtained by XRF. ⁹A1-MCa is a rhyolite from Gran Canaria (Troll and Schminke, 2002). ¹⁰Phonolite from Tenerife (Wiesmaier, 2010).

Floating sandstones off El Hierro (Canary Islands, Spain)

V. R. Troll et al.

Title Page

Abstract

Introduction

Conclusions

References

Tables

Figures

◀

▶

◀

▶

Back

Close

Full Screen / Esc

Printer-friendly Version

Interactive Discussion





Fig. 1. Overview of features of “restingolite” samples from El Hierro. **(A)** Ocean surface above the offshore eruption. Note the changed colour of the water (locally referred to as “la mancha”, i.e. “the stain”) that occurred early during the eruption. **(B–F)** “Restingolite” samples displaying typical features, such as a crust of basalt, primary sedimentary bedding, folding, high vesicularity, and mingling structures. **(G and H)** “Xeno-pumice” samples from Gran Canaria that resemble the “restingolites” from El Hierro and have been demonstrated to originate from pre-island sandstone. For additional sample images of the “restingolites” see Appendix Fig. A1.

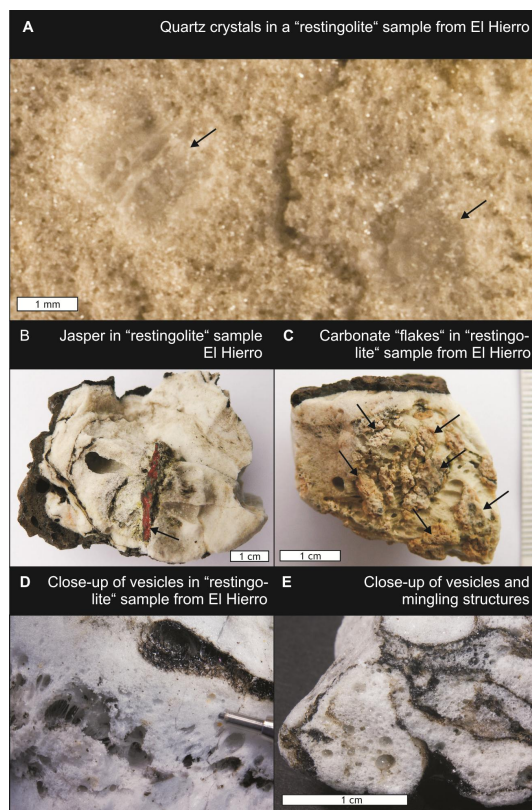


Fig. 2. Overview of small-scale features of “restingolites” samples from El Hierro. **(A)** mm-size quartz crystals. **(B)** Jasper inclusions **(C)** Carbonate “flakes”. **(D and E)** Vesicles.

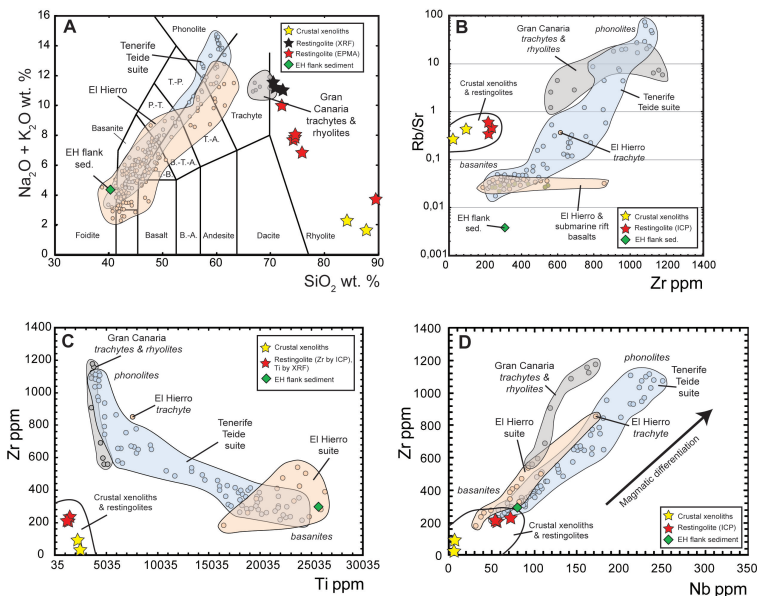


Fig. 4. Geochemical plots of “restingolites” and comparative data for El Hierro, Gran Canaria, Tenerife, and Canary Island crustal xenoliths. **(A)** Total alkalis versus silica (TAS) plot showing the alkaline Canary Island magma suites. The “restingolites” plot within the trachyte to rhyolite fields, however, they do not follow a typical Canary Island magmatic trend. Note that known crustal xenoliths from Gran Canaria (Hansteen and Troll, 2003) and Lanzarote (Aparicio et al., 2006) also plot as rhyolites. **(B)** Rb/Sr versus Zr plot. The most evolved Canary Island magmas again plot to the top right of the diagram. The “restingolites” and crustal xenoliths form a distinct group from both the least and most evolved magmatic samples. **(C)** Zr versus Ti (ppm) plot, showing the main magmatic trends (Tenerife, El Hierro and Gran Canaria) and the composition of the “restingolites”. Note that the magmatic trends and the “restingolites” and sedimentary xenoliths form distinct groups that do not overlap. **(D)** Zr versus Nb plot. Canary Island suites show strong magmatic differentiation trends, with the most evolved samples plotting to the top right of the diagram (i.e., at high Zr and Nb concentrations). In contrast to the TAS plot, “restingolites” plot near the least evolved magmatic samples. The chemical data thus underline that “restingolites” are highly atypical for Canary magma compositions and chemically resemble known sedimentary xenolith and pre-island sedimentary compositions once the full major and trace element compositions are considered. Reference data fields El Hierro (Pellicer, 1979; Carracedo et al., 2001), Gran Canaria (Troll and Schmincke, 2002; Hoernle, 1998), Tenerife (Wiesmaier, 2010).

SED

3, 975–999, 2011

Floating sandstones off El Hierro (Canary Islands, Spain)

V. R. Troll et al.

Title Page

Abstract

Introduction

Conclusions

References

Tables

Figures



Back

Close

Full Screen / Esc

Printer-friendly Version

Interactive Discussion



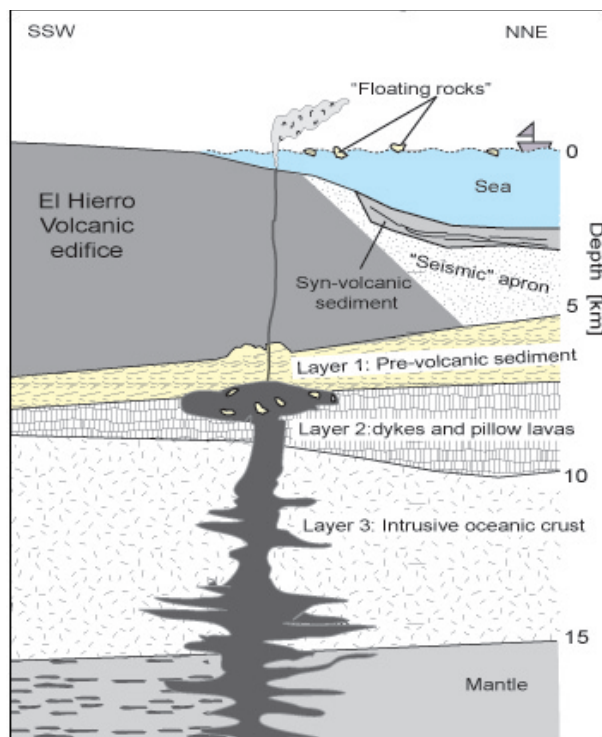


Fig. 5. Sketch showing the structure of El Hierro Island. Ascending magma that, according to the distribution of seismic events prior to eruption, moved sub-horizontally from north to south in the oceanic crust, is interacting with the pre-volcanic sedimentary rocks, and we suggest that the floating rocks found at El Hierro are the products of magma-sediment interaction beneath the volcano. The “restingolites” were carried to the ocean floor during eruption and melted and vesiculated while immersed in magma. Once erupted onto the ocean floor, they separated from the erupting lava and floated on the sea surface due to their high vesicularity (i.e. their low density).

Floating sandstones off El Hierro (Canary Islands, Spain)

V. R. Troll et al.

Title Page

Abstract

Introduction

Conclusions

References

Tables

Figures

◀

▶

◀

▶

Back

Close

Full Screen / Esc

Printer-friendly Version

Interactive Discussion



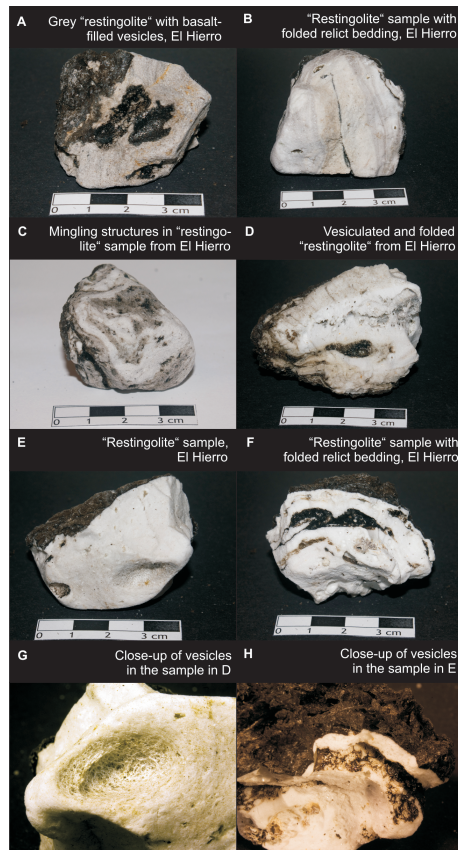


Fig. A1 Features of "restingolite" samples from El Hierro, displaying typical features, such as a rind of basalt, layering, folding, vesicularity, and mingling structures.

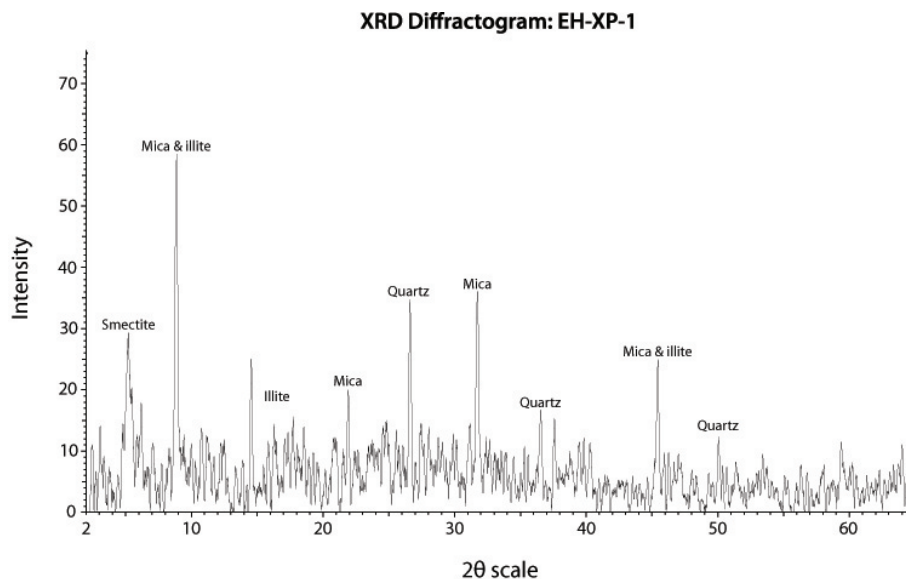


Fig. A2 XRD analysis of sample EH-XP-1 summarised in Table 1. Notably, the comparatively significant ca. 10 Å phyllosilicate (mica & illite) peak could wholly or in part represent the illite-type structure characteristic of thermal decomposition products of major primary clay minerals.

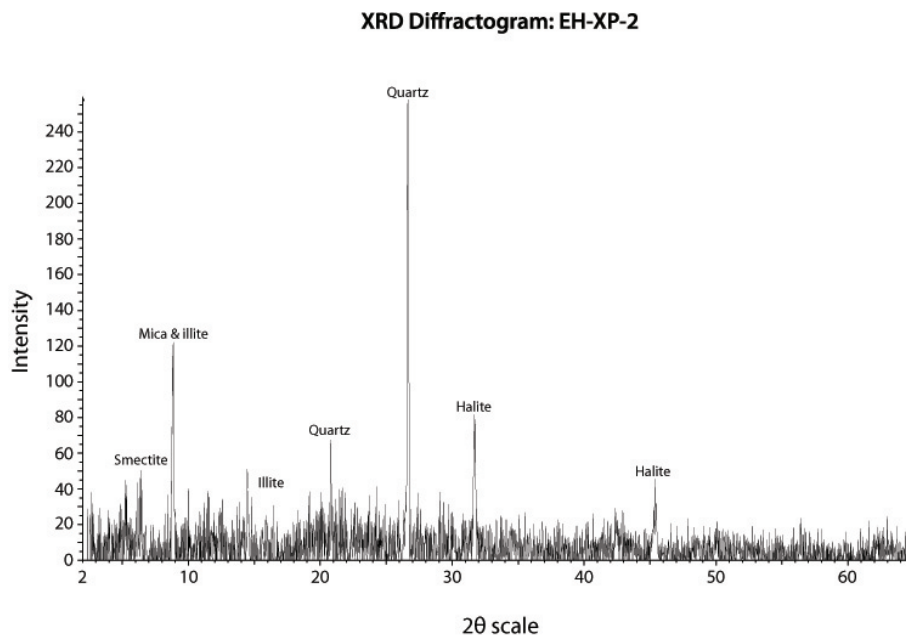


Fig. A3 XRD analysis of sample EH-XP-2 summarised in Table 1. Notably, the comparatively significant ca. 10 Å phyllosilicate (mica & illite) peak could wholly or in part represent the illite-type structure characteristic of thermal decomposition products of major primary clay minerals.